

SERVING
 Burlingame • Capitol Hill
 • Garden Home • Glen
 Cullen • Hillsdale
 • South Portland
 • Multnomah Village
 • Raleigh Hills • Vermont
 Hills • West Portland

The Southwest Portland Post

Southwest Portland's Independent Neighborhood Newspaper

INSIDE:
 Capitol Hill Road
 neighbors lobby for
 traffic calming
 --Page 2

Volume No. 17, Issue No. 4

www.multnomahpost.com

Portland, Oregon

Complimentary

February 2009

Local health clinic struggles to handle patient needs with decreased funding

By Polina Olsen
 The Southwest Portland Post

Anyone could understand the mother's anxiety but it came close to home for Southwest Community Health Center director Samira Godil. "I got a call from a mom whose son was diabetic," she told *The Post*. "They didn't have insurance and nobody was willing to take him. We saw him right away but it hit me so hard. Since my daughter is diabetic, I can feel the pain of others."

Unfortunately, Godil feels that pain all too often as the economic downturn increases demand for the center's services. Currently located in the Multnomah Center and open Tuesday and Thursday evenings and the second and fourth Monday evening of each month, the health center often books appointments three weeks out.

"We're definitely seeing an uptick," Godil said. The clinic has always served the working poor -- people whose employers don't offer health benefits or who cannot afford the premiums. "Now, we're also seeing middle class people who have lost their jobs and health insurance."

In addition, as demand rises, Godil

sees donations falter as the economic pinch affects even their most dedicated supporters. "Donations have gone down significantly just when need has gone up," she said. "Our individual donations are down about 50 percent this year. And, foundations are tougher, too, because their portfolios have gone down."

Godil got the idea for the health center while working as health coordinator for Neighborhood House. She quickly realized many families did not have medical insurance. With help from Dr. Lyle J. Fagnan of OHSU Gabriel Park, she started one-day free clinics. The first day drew more than 40 children. Clearly, this wasn't enough.

"In May 2000, I quit my job at Neighborhood House and put [the health center] together," she said. "Our scope initially was acute episodic -- simple colds, coughs, minor lacerations, urinary tract infections. Our goal was to plug the uninsured into the system but there is nowhere to send them so we started doing some chronic disease management. Diabetics, hypertension, and asthma are our top three."

In fact, current medical director Dr. Frank Dornfest pushed to expand services recognizing the patient's ongoing needs. The clinic provides diagnostic laboratory



Irina Kucherenko receives advise from Dr. Christina Milano (kneeling) as Susan Mournian, nurse coordinator, (seated at desk) checks the charts. (Post photo by Polina Olsen)

and imaging services through outsourced contractors and offers vouchers for prescription medicine. The all-volunteer physician staff from OHSU and Legacy Health System rotates shifts and come after working all day at their full-time jobs.

Most clients come from Southwest Portland; the top zip code is 97219. "When you look at the Southwest the average income is higher but there are pockets of poverty," Godil said. Many clients live

in Capitol Highway apartment blocks or in the Hillsdale Terrace or Slavin Court housing projects.

About 46 percent of patients are racial or ethnic minorities. "We have Russians, Hispanics, Vietnamese, Somalis, Kurdish, Middle Eastern, Indian, Pakistani, Nepalese, Croatian, Moldavian, Ukrainians -- lot of immigrants. We see a diverse clientele."

Despite support issues, the clinic hopes
 (Continued on Page 3)

Citizen task force votes to replace Sellwood Bridge in current alignment

By Lee Perlman
 The Southwest Portland Post

The Sellwood Bridge Citizen Task Force has completed its task after two years, having recommended that Multnomah County build a new Sellwood bridge at the same location for approximately \$293 million and replacing the 1926 structure.

In the end the 20-person group came down to a choice between Alternatives D and E, and was heavily lobbied by people potentially impacted by the alignment they opposed.

Alternative D, which would be very close to the site of the existing bridge, would require removing four units from the Sellwood Harbor condominiums and one Unit in River Park.

Alternative E would swing north from

its Southeast Tacoma Street approach and land on the west side about a quarter mile north of the existing bridge span. It would avoid the impacts of Alignment D, and two other options, but create new ones of its own.

Alternative E would take out six residential units and two businesses at Grand Place and 37 commercial spaces at River Park Center. It would also come close to the Sellwood Riverfront Park and the Oaks Pioneer Church wedding chapel. How great this last impact would be was the subject of considerable debate at two public meetings last month.

At the first meeting, on January 5, the Task Force found itself lobbied heavily by residents of Sellwood Harbor and River Park, including Jim and Catherine Laprentier. They live in one of the Sellwood Harbor units to be removed.

Catherine Laprentier said she had been a neighborhood booster working to remove vagrants living beneath the bridge and to install a running track "so all of you can have access to the river." She accused County officials of skewing the issue by showing the E Alignment as having more than two lanes, playing to fears of a large bridge that would encourage commuting from Clackamas County and lead to the expansion of Southeast Tacoma Street.

Another condo owner, Barbara Sloop, a widow on a fixed income, said the recent loss of value for property from the economic downturn would not be a concern "as long as it's just on paper." It would, however, affect her ability to sell at a price that would allow her to find a new home. "For the last two years the furnace has been dying, and I've lived by the fire place, because I don't want to put a penny into a place I might have to sell."

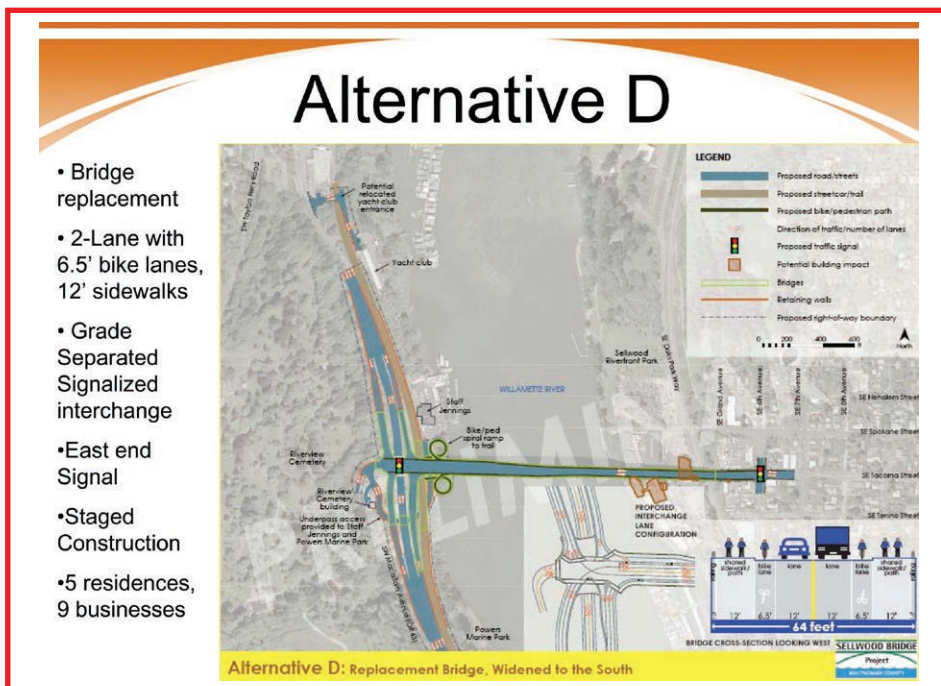
Yet another condo owner and widow, Kathleen Holahan, noted that she could not sell her unit and move now if she wanted to because no one would buy it with the cloud of possible condemnation hanging over it. "If Alignment D is picked and there's no financing, we'll be left in limbo," she said.

For this reason Jim Laprentier called on the county to either come up with a financing plan quickly or go with a No Build alternative, which would shore up deficiencies in the existing bridge enough to make it useable for the next 20 years. He argued that Alignment E would have "no serious impact" on the park or church.

The condominium owners dominated the testimony at the January 5 session, but found themselves badly outnumbered on January 19. Pat Hainley, chair of the Sellwood-Moreland Improvement League (SMILE), said that at a special meeting his board voted unanimously in favor of D, and that they would hold a march for it on January 31.

Phil Crane, a SMILE board member, spoke of the Springwater Corridor and other natural amenities of the area and said, "To have that corridor obstructed by a bridge flies in the face of all things sustainable." Lorraine Fyre, a former SMILE secretary, noted that revenue from Oaks Church functions goes to SMILE, and is used by them to operate Sellwood Station community center and functions such as their Sundae in the Park celebration.

"I don't think there's a soul in the neigh-
 (Continued on Page 5)



(graphic courtesy of Mike Pullen, Multnomah County)

Don't forget to renew your subscription. Form on Page 2.

The Southwest Portland Post
 7825 SW 36th Ave Suite #203
 Portland, OR 97219

Capitol Hill Road neighbors lobby for traffic calming, speed bumps

By Don Snedecor
The Southwest Portland Post

Southwest Capitol Hill Road stretches between Barbur Boulevard and Bertha Boulevard, creating a borderline between the Hillsdale and Multnomah neighborhoods. But neighbors Lisa Broten and Mellani Calvin say that with no sidewalks, speed bumps are needed along the narrow cut-through to slow traffic down for the safety of residents and visitors.

Broten and Calvin spoke to the Multnomah Neighborhood Association on January 13 at the Multnomah Center. "We were really hoping that the City would follow through on their promise to have someone at that meeting tonight

FROM THE EDITOR'S DESK

so that more folks could see their two proposals," said Calvin.

"Many of the folks on our street had heard that Capitol Hill Road had become eligible for speed tables [long flattened bumps] but we sure could use some 'spreading of the word,' said Calvin.

According to Will Stevens of the Portland Office of Transportation (PDOT), what the neighbors need is approval of both Hillsdale and Multnomah neighborhoods, along with a super-majority (67 percent) of home owners that live along this road.

But that isn't all. Once the community has approved the speed bump program,

then the folks have to raise the money themselves—approximately \$2200 per bump. Nine to 11 bumps are planned. "Hillsdale has given us their support already and as you know, we're hoping for a vote next month in Multnomah," said Calvin.

That Multnomah meeting will be held on Tuesday, February 10 at the Multnomah Center. Stevens or another PDOT representative is scheduled to make a presentation on the Capitol Hill Road traffic calming plan at that time. It should be noted that only the residents who live along the western side of Capitol Hill Road (who live in Multnomah) will be eligible to vote on this item. *Please see photo on Page 4 of this issue.*

construction on the Fanno pump station, the Fanno Pressure Line, and a gravity sewer line in Southwest Vermont Street at a total cost of \$18 million. The Fanno projects replaced a system that relied on five old pump stations.

After numerous pipeline breaks in 2005, 2006 and 2008, BES deactivated the Fanno Pump Station and pressure sewer and began diverting the flow to a gravity line that conveys wastewater to the Durham Treatment Plant in Washington County.

The city is seeking to recover costs from companies responsible for the design and construction of that line that has failed.

The Multnomah Boulevard project area, which would be constructed in 2009, stretches between Southwest 69th and 31st avenues. BES has requested a variance which would allow them to do construction during the hours of 7:00 p.m. to 6:00 a.m.

A hearing on the noise variance application will be held on Wednesday, February 11, at 6:00 p.m. at 1900 SW 4th Avenue. For more information, please contact Stephen Sykes at 503-823-7898 or stephen.sykes@bes.ci.portland.or.us.

Fanno Pressure Sewer Line scheduled to be replaced along Multnomah Blvd

As Yogi Berra used to say, it's déjà vu all over again. After installing a brand new pressure sewer line underneath Southwest Multnomah Boulevard and Garden Home Road in 2000, the City of Portland Bureau of Environmental Services says that the entire section needs to be replaced.

According to Dan Hebert, BES project manager, the project is scheduled to break ground in August or September of this year, construction would continue until October 2010.

The Multnomah section is a 30-inch PVC plastic pipe. The Garden Home section is a 32-inch HDPE plastic pipe. Hebert steel pipe will be used in both sections instead.

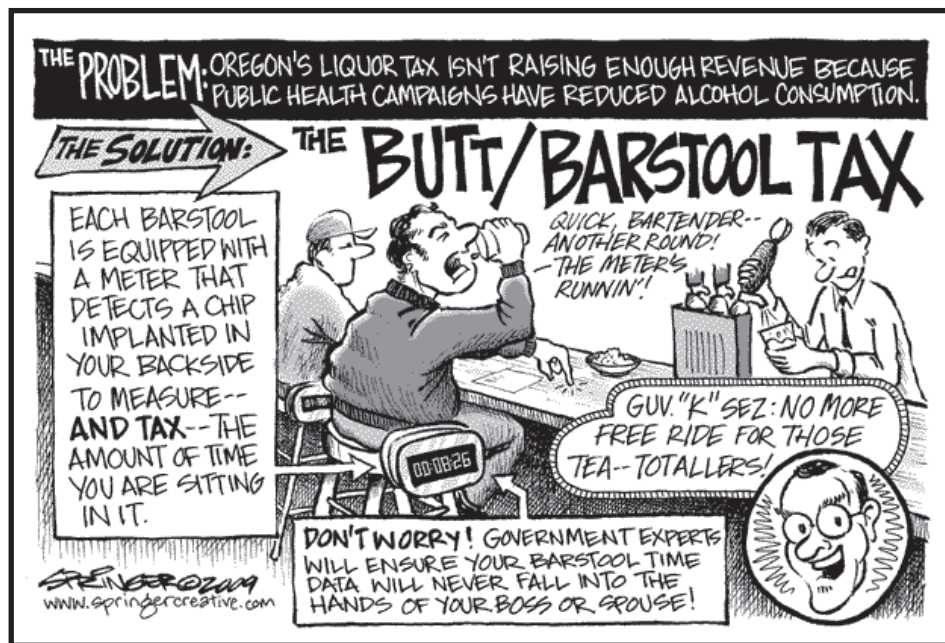
In 2000, the City of Portland finished

Water Bureau seeks public input in replacing Fulton Pump Station

According to Tim Hall with the City of Portland Water Bureau, the Fulton Drinking Water Pump Station—located on SW Nevada Street between Macadam and Virginia avenues is nearly 100 years old and needs to be replaced.

Water bureau literature explains that the existing facility "is critical to the City's

(Continued on Page 8)





Aussie Pet Mobile
Portland Metro Area

We Come To You!

FULLY-EQUIPPED, CLIMATE CONTROLLED PET MOBILE
WITH
PROFESSIONALLY TRAINED GROOMERS


◆ 15 STEP GROOMING PROCESS	◆ SAVES TIME & GAS!
◆ BREED CLIPS	◆ LESS STRESS ON YOUR PET & YOU!
◆ SPECIAL TREATMENTS (FLEAS, TICKS, ALOE & MORE)	◆ NO MESS!
	◆ CONVENIENT!

Mention this Ad & Get \$5.00 off your Pet's First Groom

Call Now
503-758-8211
503-758-6449

Keep 'em Clean 'n Cute!






MARQUIS
CARE
AUTUMN HILLS

Residential & Intermediate
Alzheimer's Care

It's about what we can do,
not what we can't.



(503) 292-7874
6630 SW Beaverton-Hillsdale Hwy.
Portland, Oregon 97225
www.marquiscompanies.com

When you choose to spend your dollars with locally owned, independent businesses:

- Up to 3 times more money re-circulates in our local economy.
- More local jobs are maintained and created.
- The character of our neighborhoods is enhanced and preserved.
- You are making a REAL difference in the quality of life of our community.



Choose locally owned businesses

www.sbnportland.org



7825 SW 36th Ave Suite #203
Portland, OR 97219
Phone: (503) 244-6933; Fax: (866) 727-5336
general email: news@multnomahpost.com
web address: www.multnomahpost.com

PROUD MEMBER



Multnomah Village Business Association

Hillsdale Business & Professional Association

Editor & Publisher: Don Snedecor
Reporters/Writers: Kate Bennett, Polina Olsen, Lee Perlman, Don Snedecor
Retail Advertising Manager: Harry Blythe
Graphic Design: Leslie Baird Design
Printing: Oregon Lithoprint

© 2009 by The Southwest Portland Post. All rights reserved. The opinions of the artists and authors contained herein are not necessarily shared by the publisher.
Deadline for news and advertising is generally the 15th of the month prior to publication. Please call for current deadline information. Advertising rates are available upon request.

The Post has a circulation of 10,000 in Multnomah Village and the surrounding neighborhood business districts including Burlingame, Capitol Hill, Garden Home, Glen Cullen, Hillsdale, South Portland, Raleigh Hills, West Portland and Vermont Hills. The Post is published on or about the 1st of every month. Subscriptions are \$24 per year. Back issues are \$2.50 each when available. All major credit cards accepted.





The Post is printed on recycled newsprint using soy-based inks.







February Special

Mail subscriptions are available at the following rates:

One year (12 monthly issues)..... \$14
Two years (24 monthly issues)..... \$24
Three years (36 monthly issues)..... \$34

Please send check or money order to:
7825 SW 36th Ave #203, Portland 97219

The Southwest Portland Post

Name _____

Address _____

City/State/Zip _____

Classes, community gardens, swimming pools could be among park bureau cutbacks

By Lee Perlman
The Southwest Portland Post

Hard times are coming, and seniors, gardeners and young basketball players will be among those taking the hit.

This was some of the news representatives of the Portland Bureau of Parks presented to a standing-room-only crowd of more than 400 people last month at a preview of its upcoming budget.

Anticipating a major drop-off in revenues due to the ongoing recession, Mayor Sam Adams has directed all city bureaus to prepare "cut packages" equal to 2.5 and 5 percent of their 2008-09 budgets. Parks representatives gave those present a taste of what that will be like.

Among other things, the draft budget as of January 10 proposed elimination of the bureau's youth basketball program. The budget also called for a 50 percent fee increase, from \$50 per season to \$75, for use of each growing plot in the bureau's Community Garden program, which provides 1,000 plots citywide for would-be gardeners who do not have yards of their own for growing.

As part of this reduction also, although all existing garden plots would be retained and maintained, the bureau would cease outreach efforts to create new plots for the program, which has 1,000 would-be gardeners on a waiting list.

The draft also called for elimination of a staff position that helped collect "excess food" from community gardeners who grow more food than they can use, and deliver it to food banks for delivery to the needy.

Additionally the draft budget would:

- Eliminate one of the 12 SUN School after-school activities programs funded by the Parks Bureau. (Other SUN School programs, similar in nature, are funded from other sources.)
- Reduce the operating season for outdoor swimming pools, including the Wilson High School pool, by two weeks.
- Cut \$130,000 from the "pass through" funds the city contributes to eight local senior centers, including the Neighborhood House Senior Center, through Multnomah County.
- Cut or eliminate funding for classes and other activities at these senior centers, while trying to "absorb" them at the bureau's own community centers such as the Multnomah Center and Southwest Community Center at Gabriel Park. Based on the priorities presented last month, this would not be part of a 2.5 percent cut, but would be used in a five percent cut.

Concerning this last, bureau officials at the meeting and in subsequent conversations concede that it would be difficult to absorb all the Senior Center activities within the existing capacities of community center, and probably impossible to do so while retaining the rates seniors have been paying for these activities.

For instance, one person who testified last month stated that a class currently offered at Neighborhood House costs \$22 per session, while a comparable activity at Multnomah Center costs \$200. Some current users of these services "may be priced out," Terri Davis, the bureau's West Services Coordinator, told *The Post*.

The "pass through" cuts will mean a reduction of \$8,000 in the budget of each senior center, said Lee Girard of Multnomah County's Aging Services

Division. The funds are used for a variety of services, she said.

One proposal to absorb the impact is to cut funds for 2,500 one-way trips to the center for seniors in need of such services. Another proposal is to leave the travel services intact, allowing a "much bigger impact" on other operating services, especially considering the increasing demand we're likely to see" for senior support services in the recession, Girard said.

Southwest Neighborhoods Inc. Trails Committee chair Don Baack attended the budget session and told *The Post*, "I found it very frustrating. There was such a lack of information. There was no context for these decisions. They didn't sit down with us and say, 'Okay, what's important to the community and how can we provide it?' They ask the community to accept them as the divine hand."

To the extent that there has been outreach, "They focus on user groups, not the neighborhoods," which Baack felt

skewed the result. Baack was especially frustrated by the proposed cuts and fee increases for Community Gardens, saying, "Encouraging people to grow their own food is an extremely high priority." The bureau could work with volunteers to get surplus produce to food banks and other helping agencies, he said.

In short, Baack said, "I'm not convinced these are the appropriate cuts." Neither, it seems, do bureau administrators, starting at the top. According to several Parks representatives, commissioner Nick Fish, who oversees Parks, is unhappy with the cuts proposed for senior services, and has asked for a new budget that creates savings in other ways.

According to bureau spokesperson Beth Sorenson, there will be a new set of Portland Parks and Recreation budget meetings in February. For more information or to register your reaction to the proposed cuts, you can contact the bureau at www.portlandparks.org.

Local health clinic

(Continued from Page 1)

to move to a larger facility at 7754 SW Capitol Hwy. "This is all grants that we write constantly to keep filling up the pots so we can keep these programs running," Godil said. "We can't survive without donations. Faith organizations are a big part of our fundraising -- Christian, Jewish and Muslim.

Clients pay on a sliding scale based on their pre-tax income and family size. "Patients are very willing to contribute," Godil said. "We've had numerous instances where people did not have money but later mailed us a check."

She remembers one man walking in with a \$20 bill months after his appointment. He told her, "I didn't have money but now I do so I'd like to give a donation. You guys really helped me at my time."

The Southwest Community Health Center, 7688 SW Capitol Hwy (in Room 37 of the Multnomah Arts Center) is open Tuesdays and Thursdays from 4 p.m. to 8 p.m. and the second and fourth Mondays of the month from 6 p.m. to 8 p.m. Appointments are required. For more information visit www.swchc-pdx.org or call (503) 977-0733.

Financial uncertainty is here. Fortunately, so are we.

Let an independent financial advisor help you craft a plan that puts your interests and objectives first. That's an approach that makes sense in these—or any—market conditions.

Green and Pasciak Financial Services, PC

Nicholas Green
Jackie Pasciak, CRPC®

5331 SouthWest Macadam Avenue, Suite 320, Portland, OR 97239
Phone: 503.517.8524 • jackie@greenandpasciak.com

Securities and Advisory Services offered through Commonwealth Financial Network,® Member FINRA/SIPC, a Registered Investment Adviser.

Deeper Sedation Dentistry...

Dr. Little at West Hills Family Dental Center now offers

DEEP SEDATION DENTISTRY.

It's MORE EFFECTIVE than just a pill.



Call and find out why West Hills Family Dental Center is different.
503-291-0000 • www.fearfreedental.com

City of Portland Community Budget Forums

The Portland City Council invites you to attend an interactive Community Budget Forum to share your City budget priorities. City Council and bureau directors will participate in the discussions.

A Community Fair will be held during the first thirty minutes of each forum.

3 Options!

Thursday, February 19, 6-8:30 PM

St. Johns Community Center
8427 N Central Street
Bus lines: 44; 17; 4; 75

Saturday, February 21,

9:30 AM-12 noon
Floyd Light Middle School
10800 SE Washington Street
Bus lines: 20

Tuesday, February 24, 6-8:30 PM

Multnomah Arts Center
7688 SW Capitol Highway
Bus lines: 44; 45; 64

For more information visit:

www.portlandonline.com/communitybudget

Or call: 823-5288

All locations are ADA accessible.
Accommodations: call 823-2559 in advance
TDD: 823-6868

Z-FIORI

Flowers • Gifts • Wine • Stationery

FEATURING Local and imported wines and sparkling wines
Fabulous South American Roses
Decadent Moonstruck Chocolates
Unique gifts and one of a kind jewelry

Local & worldwide delivery available - quantities are limited so order today!

Your one stop for Valentines Day 2009

Located in Hillsdale Shopping Center
6350 SW Capitol Hwy
Portland, OR 97239
503.246.4221

Locally owned and operated.

OREGON SCHOOL of MASSAGE

Offering Western and Eastern bodywork focuses.



Interested in massage therapy? Try a beginning class!

Couples Massage

February 14
Saturday, 9am-5pm
\$240 per couple

Massage Basics

February 20-March 13
Friday, 6-8:30pm
\$130

Or register now for one of our general interest classes!

Living Energy of Compassion

February 11
Wednesday, 6:30-9:30pm
\$60

Reiki Healing

March 13-15
Fri. 6-8pm; Sat.-Sun. 9am-6pm
\$295

Spring Term begins March 30th! Contact our Admissions Coordinator, or attend a free Massage Training Preview February 28th at 10am. Visit our website for additional dates and times.

9500 SW Barbur Blvd. #100
Portland, OR 97219
503-244-3420 or 1-800-844-3420
www.OregonSchoolofMassage.com



Hillsdale neighbors discuss appropriate response to snowstorms

By Polina Olsen
The Southwest Portland Post

The January 7 meeting of the Hillsdale Neighborhood Association started with a discussion of the recent snowstorm. One attendee's father fell and broke his hip, while many worried about the effect on local merchants (which was, in fact, devastating).

Some got together with neighbors for potlucks and solstice parties. One woman reported thousands of dollars in water damage and many commented on the benefits of Food Front, a neighborhood grocery within walking distance.

Don Baack opened a general discussion of how the city handled snow removal during the recent storms. Mike Roach, owner of Paloma Clothing and president of the Hillsdale Business and Professional Association, thanked everyone who shopped in Hillsdale during December explaining the snow made it "a tough month for all merchants."

Most attendees felt Portland did not have a system to deal with heavy snow. Several people complained that the city plowed snow onto sidewalks particularly at bus stops. Don Baack suggested designated spots to pile snow in future. Others suggested Wilson High athletes stand by for emergency shoveling.

Rick Seifert, editor of the Hillsdale News, suggested that the Southwest Neighborhoods, Inc. (SWNI) Emergency Preparedness Team take up the issue noting a lack of organized response during the snowstorm.

One attendee said that although the

HILLSDALE NOTEBOOK

storm caused inconvenience, the city's limited budget demanded prioritized spending. "I don't want the city to allocate \$5 million on (snow) ploughs that are used once every five years," he said.

Additional agenda items for discussion included:

Terwilliger Boulevard Closure: The October 8, 2008 landslide on Burlingame Place destroyed several homes and blocked Terwilliger Boulevard. Insurance companies have approved funding for the removal of two destroyed homes.

Capitol Highway Cycle Track and On-Street Parking: This proposal would add a raised pedestrian walk and raised bike path along Southwest Capitol Highway between Sunset Boulevard and the Wilson High School entrance on Vermont Street. Right now, the bike path is at the street level.

Don Baack, chair of the Hillsdale Neighborhood Association, voiced support explaining it would look like a wide sidewalk. He said it could open the way for on-street parking since a raised bike path would prevent people parking in the bike lane. Several others agreed with the proposal citing increased cyclist safety.

Speed bumps along Capitol Hill Road: Will Stevens, program manager of traffic operations for the Portland Office of Transportation, discussed a proposal for adding speed bumps along Southwest Capitol Hill Road.

Stevens noted the Hillsdale Neigh-



Will Stevens (left), PDOT traffic operations program manager and Don Baack show proposed Southwest Capitol Hill Road speed bump placement. (Post photo by Polina Olsen)

borhood Association, the Multnomah Neighborhood Association, and at least 67 percent of the affected residents along Capitol Hill Road must approve the project.

The residents and neighborhood must provide the approximately \$3000 per speed bump. The city has two proposals, one with nine speed bumps and one with eleven. Further discussions are planned. [Editor's Note: See separate story on Page 2]

Rieke Elementary School Soccer Field: Marlys Mock from Portland Public Schools and Bob Downing, Portland Parks and Recreation Support Services Manager, discussed replacing the Rieke Elementary School (1405 SW Vermont St) soccer field. The city closed the field

last September due to lead concerns but reopened it in December after deeming it safe. The heavily used field is worn five years beyond city guidelines and should be replaced, according to Downing. The new turf cost estimate is \$750,000.

Southwest Trails Liability Issues: The Southwest Trails Committee, the City of Portland, and abutting property owners worry about potential lawsuits from trail users. Don Baack reported "tremendous support downtown" for SW Trails and that liability was a matter of sorting through complicated rules with city officials. He hopes SW Trails will emerge from the discussions with a clear charter.

OHSU FAMILY MEDICINE at Gabriel Park

We Specialize in You and Your Family

- General medicine
- Pediatric care
- Lab
- Obstetrics and gynecology
- Family planning
- Office surgery
- Sports medicine
- Travel medicine
- X-ray
- Bone-density screening
- Orthopedics
- Acupuncture
- New on-site pharmacy



Conveniently located across from the Southwest Community Center. Free Parking! To schedule an appointment, please call (503) 494-9992.

{Hours} Monday through Thursday: 7:30 a.m. to 8:00 p.m.
Friday: 7:30 a.m. to 5:00 p.m.
Saturday: 9:00 a.m. to 1:00 p.m.



Oregon Health & Science University
Gabriel Park Clinic
4411 SW Vermont Street
Portland, OR 97219
Email: fmgp@ohsu.edu



BIG BITES FOR LITTLE PRICES



4p-6p 7 Days a Week
8p-Close Sun-Thur
10p-Close Fri & Sat

MOLLY'S WINTER LUNCH PLATES

\$4.95

- Cuban Sandwich & House Made Soup
- Chicken Satay & Spicy Thai Noodles
- Tsunami Chicken Tacos w/ Coconut Rice & Cuban Black Beans


A WORLD OF FLAVORS
Salvador Molly's

1523 SW SUNSET BLVD.
PORTLAND, OR

503.293.1790
WWW.SALVADORMOLLYS.COM

Coming Soon from SKYE HOMES

SkYeHomesNW.com



ML# 9002662

Artisan 5 BR, 3397 Sq. Ft. home with extensive hardwoods, slab granite, Energy Star certified, oversized yard & more!
Now Offered at: \$689,900 ~ 4779 SW Sweeney St., 97221

TIM CAIRNS
Broker, RE/MAX equity group
(503) 495-5012 direct

Sellwood Bridge

(Continued from Page 1)

borhood who is not positively impacted by the revenue from that church," she said. Several of those who spoke said that even though Alternative E as presented would have only two traffic lanes, there was the potential that in the future it could be converted to handle more traffic.

Eric Miller of the Sellwood Play Group Association said he was "very concerned about the place where we held summer concerts being impacted. We, the residents of Sellwood, value our community resources." Clearly referring to the condominium owners he said, "I have deep sympathy for those in the community suffering hardships because of this project," and urged "swift action" to get it built.

Most of those who spoke expressed sympathy for the concerns of their opponents. There were some exceptions. John Luddick, who said he was for E, declared the option would have no significant

harm on either the church or park, might even "enhance" the church, and asked, "Which would you prefer?" When the answer was a chorus of "D!", he replied, "Then you're not paying attention."

Conversely, when Chris Eeep said, "Don't put the needs of a few above the needs of the many. It's disingenuous of the owners to say they'll be injured by this decision," he was booed.

Nearly all the testimony concerned the impact on the east side of the river. The only person testifying about the west side was David Noble of Riverview Cemetery. He asked the group to "retain access" to the cemetery's property, and said he was glad Alternative C, which would have disrupted it the most, was gone.

Noble gave no overt preference for either option, but expressed concern that the land under Alternative D on the west side is known to be unstable. Of the Task Force he said, "I congratulate you. You work hard, you get no pay, and you get

to lose all your friends."

Following the testimony the Task Force held a form of secret ballot arranged by consultant Elaine Cogan, placing dots to indicate their preferences on boards concealed from the audience. Nearly all voted for Alternative D, and against a "roundabout" arrangement on the east end that might have funneled cars onto neighborhood streets.

The group split almost perfectly in half on whether the bridge should have a third lane. The matter will now go to the Policy Advisory Group, made up of elected or appointed officials from participating jurisdictions and agencies. Task Force members in the past have complained that the PAG has ignored their recommendations.

Clearly aware of this issue, Multnomah County Commission chair Ted Wheeler told the Task Force, "We take seriously what you provide us. We have had problems with communication. I want to give

you an honest heads up about how we'll use your information."

According to Wheeler, "We bring different interests to the table. There may be slightly different lenses. But as we make our decisions, we'll be totally open and honest. We hope you feel satisfied your work was honored, even if we don't agree with you point by point."

To Advertise in

The Southwest Portland Post

Call Don or Harry at 503-244-6933



Three Square Grill
real american food
Valentine's Supper
Saturday February 14
Sunday Breakfast
6320 Sw Capitol Hwy • Portland • 503 244-4467
eat at threesquare.com • shop at picklopolis.com


Dining Out Guide

To Advertise Call:
503-244-6933

BUFFALO GAP Saloon & Eatery



MEALS FROM AMERICA'S HEARTLAND
The inspiration for our menu comes from the broad landscape of traditional American cuisine: Hearty Comfort Food, Prepared From Scratch. Open Breakfast, Lunch, Dinner 7 days a week
www.thebuffalogap.com
6835 SW MACADAM AVE - 503.244.7111

O'CONNORS
Restaurant & Bar Since 1934
Breakfast including Eggs O'Connor and other notables. Served Mon - Fri, 7 - 11 a.m. Weekends 8 a.m. to 2 p.m.

HOURS: Monday-Friday 7am-2am; Saturday 3am-2am; Sunday 3am-midnight
7850 S.W. Capitol Highway
in Multnomah Village
503-244-1690

Macadam's Bar & Grill

Finally a neighborhood sports bar with good food!



Buy One Entrée, Get One FREE
(Offer good Sunday-Thursday after 5pm. Expires 2-28-09. One coupon per table.)

20 wide-screen TVs • Weekend breakfast
Freshly prepared comfort food

5833 SW Macadam Ave. • 503-246-6227
www.macadamsbarandgrill.com



Your Neighborhood Restaurant & Bar Since 1982

11830 Kerr Parkway

Lake Oswego
503-246-7153



\$5 Off!

buy one lunch or dinner entree and two beverages and receive up to \$5 off the second entree of equal or lesser value

Expires 3/6/09

Home of the World Famous Wilted Spinich Salad

• burritos • bowls • quesadillas • home-baked cookies & pies • organic juices • real fruit smoothies • micro-brewed sodas and beers • home-made soups and salads • sustainable and locally grown produce

Good for Your Health, Good for Your Wallet

NOW OPEN IN SW HILLS-GABRIEL PARK!



Laughing PlanetCafe

Out-of-this-world food that's wholesome, fast, affordable and portable.

4405 SW VERMONT — 503.244.4254
4110 SE WOODSTOCK — 503.788.2921
3320 SE BELMONT — 503.235.6472
3765 N MISSISSIPPI — 503.467.4146
922 NW 21ST — 503.445.1319

WWW.LAUGHINGPLANETCAFE.COM

• A full dollop of humor and irreverence to aid digestion •

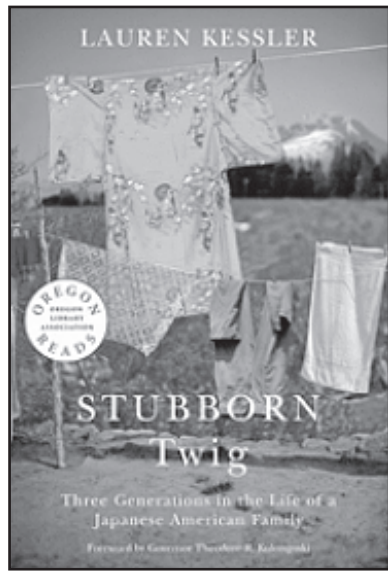
COMMUNITY LIFE

By Don Snedecor
The Southwest Portland Post

4 Hillsdale Neighborhood Association meets again on Wednesday, February 4 at 7:00 p.m. at St. Barnabus Episcopal Church, 2201 SW Vermont St. Contact the Southwest Neighborhood office at 503-823-4592 for agenda information.

5 Pageturners are reading *Stubborn Twig: Three Generations in the Life of a Japanese American Family* by Lauren Kessler. Join in for "Everybody Reads," Multnomah County Library's annual community-wide book discussion.

Engage in stimulating conversation about books, exchange perspectives about characters and plot, and get to know your neighbors. Thursday, February 5, 1:30-2:30 p.m. and Tuesday, February 10, 7-8 p.m. at Capitol Hill Library, 10723 SW Capitol Hwy, 503-988-5385.



7 Give Your Heart to Art is a benefit auction for the Multnomah Arts Center (7688 SW Capitol Hwy in Multnomah Village). Enjoy an evening of food, drinks, fellowship, live entertainment and get a chance to bid on fabulous auction items including a trip to Italy. Saturday, February 7, from 6:00 to 10:00 p.m.

Funds raised go directly to the arts center to maintain and improve studios and facilities, to expand programming, and to keep fees affordable for students. Tickets are \$45 and are available at the MAC or online. To preview auction items visit <http://mac2009.tofinoauctions.com>.

8 Chess at the Hillsdale Library Here's one for the whole family. Play a game or get tips from a tutor. Chess sets provided or bring your own. Sundays, throughout the month of February, noon-2 p.m. at the Hillsdale Library, 1525 S.W. Sunset Blvd., 503-988-5388. Players of all levels welcome.

10 Multnomah Neighborhood Association meets again on Tuesday, February 10 at 7:00 p.m. at the Multnomah Center, Capitol Room, 7688 SW Capitol Hwy. Contact the Southwest Neighborhood office at 503-823-4592 for agenda information.

13 Volunteers will deliver Valentine-A-Grams to individuals and businesses on the morning of Friday, February 13, to benefit the more than 5,000 Portland and Vancouver area seniors served by Loaves & Fishes Centers daily. Each gift box contains famous maker cinnamon rolls and chocolates.

Valentine-A-Gram relies on more than 450 volunteers to deliver the gift boxes. Deliveries take about an hour and begin at 7:30 a.m. Pick-up points are available on both the east and west sides of Portland and in Vancouver. To order Valentine-A-Grams by February 9 or to volunteer to deliver, go to www.valentine-a-gram.org or phone 503-736-6325.

14 I ♥ Oregon: A Birthday Celebration Reflections and refreshments to celebrate the state we're in! Librarians will help you upload your Oregon story (print or audio) to the Oregon 150 website, to be archived for future generations. For more in-

(Continued on Page 7)

~GUTTER CLEANING~

We Do It All From A To Z

Gutter Guards

CCB 178799 WA Ameril *936PQ

Moss Removal

FREE Estimates

Roof Cleaning • Pressure Washing • Repairs • Etc

Americhoice

503.267.0276 www.Americhoicellc.com

POST A TO Z BUSINESS CARD DIRECTORY

503-244-6933

Beaverton Hills

~ An Assisted Living Residence ~

Cherie Henry
ADMINISTRATOR

4525 S.W. 99th Avenue ~ Beaverton, Oregon 97005
(503) 520-1350 ~ Fax (503) 671-0511 ~ www.mtwestret.com

WOOD FLOORS

WOOD FLOORS

by C.Z. Becker Co.

(503) 282-0623
www.czbecker.com
CCB# 48132

Restored to their original beauty

Woof. Meow. Hooray.

A separate clinic for dogs.

A separate clinic for cats.

Peace under one roof.

Best Friends Veterinary Medical Center

503-892-6387

Colette M. Cameron Attorney at Law

7822 SW Capitol Hwy #2 Portland 97219
503-977-5101 Main 503-977-5122 Fax

Family Law • Custody • Divorce
Child Support • Guardianship • Criminal Law
Misdemeanors • Felonies

Attorney with over 16 years experience

Licensed in Oregon, Washington, & California
Reasonable Rates

Cosas Bonitas Oregon

"Beautiful Things" from Latin America
Fair Trade Indigenous Fine Folkart & Crafts
Large Selection, Great Prices

- Very Fine Mexican Huichol Indian Beaded Art, Yarn Art & Jewelry
- Tin Mirrors, Pottery, Carvings, Day of the Art, Masks Plus Much More!

By appointment in Hillsdale • 971-212-3505
www.cosasbonitasoregon.com

Cuts & Chemistry LLC
Hair Design and Color Specialist

Sue

(503) 246-2077
6349 SW Capitol Hwy
Portland, Oregon 97239
Cell (503) 318-9890
Mightyme35@aol.com

Decks • Stairs • Rails • Trellises • Screens • Benches

DECKS

I live in the neighborhood. CCB#173192

Davis Hart...503-888-4342...DecksByDavis.com

Client • Trainer • Goal

FT FITNESS TOGETHER

7417 SW Beaverton Hillsdale Highway Suite 500
across the street from Raccoon Lodge in Portland

503-206-7675
FTraleighills.com

Julia Fitzgerald

phone: 503-244-6905
fax: 503-244-4569
juliafitzgeraldcpa.com
www.juliafitzgeraldcpa.com
4620 SW Beaverton-Hillsdale Hwy, Suite B-4; Portland, OR 97221

Julia Fitzgerald, CPA, PC

A professional resource for your home business or small business.
QuickBooks® • Taxes • Business Development

Roger Frank, Ph.D.

Licensed Psychologist

Specializing in the assessment and treatment of low self-esteem and self-confidence

Most insurance accepted,
evening appointments available

5331 SW Macadam, Suite 363 Port., OR 97239
Tel. 503-294-1599

GARFINKLE ORTHODONTICS

HIGH TECH HIGH TOUCH

Complimentary Evaluations for Children and Adults

1616 SW Sunset Blvd., Portland, OR 97239
Phone: 503-246-9802 Fax: 503-246-9995
info@garfinkleortho.com www.garfinkleortho.com

Healthy Pets Northwest

The Natural Alternative for Pet Foods & Supplies

7642 SW Capitol Hwy • 971-222-2686

All Natural Foods • Herbal & Homeopathic Remedies
Allergy Relief • Raw Food Diets • Grooming Products
Collars • Leashes • Toys • Books

10-7 M-F, 10-6 Sat, 12-5 Sun • www.healthypetsnw.com

OPEN Tuesday—Saturday
12-7

Wine Tastings every
Thursday 4-7

Offering great wines
at a great price!

KORKAGE wine shop

6351 SW Capitol Hwy
~Hillsdale~
503-293-3146

www.korkagewineshop.com

COMMUNITY LIFE

(Continued from Page 6)

formation about Oregon Stories, go to www.oregon150.org/oregon-stories. Saturday, February 14, 2-4 p.m. at the Hillsdale Library, 1525 S.W. Sunset Blvd., 503-988-5388.

18 Vehicle law class for bicyclists
Wednesday, February 18, 5:30 p.m.-6:30 p.m. Class on Oregon's vehicle laws from a bicyclist's perspective with bike lawyer Ray Thomas, Bicycle Transportation Alliance office, 1979 SW 5th Avenue. Free. Contact: BTA at 503-226-0676 to pre-register.

22 The newly renovated pipe organ will be dedicated in a concert by organist Tim Ditch on Sunday, February 22, at 4:00 p.m. at the Hillsdale Community Church, 6948 SW Capitol

Hwy. The concert will include pieces by J.S. Bach, Seth Bingham, Leo Sowerby, and David Hegarty. Free. Donations toward the organ fund will be accepted. For more information, contact the church office at 503-246-5474 or e-mail officeadmin@hillsdaleuucc.org.

26 Multnomah Village Business Association will meet again on Thursday, February 26 at 8:30 a.m. at O'Connor's Restaurant (annex), 7850 SW Capitol Hwy, 503-244-1690. Visit www.multnomahvillage.org for more information.

24 Community Budget Forum, Tuesday, February 24, 6:00 p.m. to 8:30 p.m., Multnomah Center Auditorium, 7688 SW Capitol Hwy. The community budget forum will give community members direct access to City Council and top bureau leadership. Participants

are asked to choose two focus areas from the following: parks; transportation; utilities; community development; and public safety.

The city will need to make budget reductions this year and the council is most interested in those programs and services the community feels are most important to keep. For more information, to sign up for childcare or a Spanish language option call 503-823-5288 or visit www.portlandonline.com/communitybudget.

28 Kirk Duncan and the Localized Juice Embargo play the Buffalo Gap Saloon (6835 SW Macadam Avenue, 503-244-7111) on Saturday, February 28 at 9:00 p.m. If you miss the troubadours that play Saturday Market in the summertime, you'll definitely want to check out Duncan and

his posse. Listen to the music at www.myspace.com/kirkduncan.

Mar. 3 Tenth Annual Multicultural Celebration
The community is invited to join in the fun on Tuesday, March 3, from 5:30 to 8:00 p.m. at Robert Gray Middle School. The evening entertainment will include live performances, hands-on craft activities and multicultural displays from students and local artists.

Admission is free and will feature delicious ethnic foods for sale at the World Café.

Students, faculty/staff and parents as well as local restaurants are collaborating to present this fun, family event. Robert Gray Middle School is located at 5505 SW 23rd Ave in the Hillsdale neighborhood. For more information, call the school office at 503-916-5676.

POST A TO Z BUSINESS CARD DIRECTORY 503-244-6933



TeriAnn Kruse
CPA, LLC

We take care of your bookkeeping so you can take care of business.

503-244-0813

tkruseinfo@tkrusellc.com
9045 SW Barbur Blvd., Suite 116
Portland, OR 97219

TeriAnn Kruse, CPA
Carolyn Peterson, CPA



Logo Website Business Card
Neal Lubow
503-245-8148
IdeasByTheHour.com

Rent MY Mind

STEPHENS MARGOLIN P.C.

C. Sean Stephens and Daniel Margolin ATTORNEYS
info@stephensmargolin.com

Family Law representation including appeals and collaborative divorce

1001 SW 5th Avenue, Suite 1300
Portland, Oregon 97204

(503) 546-6374 fax (503) 546-6376 (866) 336-9346

WWW.STEPHENSMARGOLIN.COM



MVP, Inc.
Volvo Service & Repair

OWNED AND OPERATED BY A VOLVO MASTER TECHNICIAN

VOLVO Paul Erickson
Office: 503-892-9405
Fax: 503-892-8763
E-mail: info@mvpvolvo.com

- Service
- Repair
- Performance

3530-A SW Multnomah Blvd., Portland, OR 97219
(across from John's Marketplace)
www.mvpvolvo.com

PRECISION HOME REPAIR & DRYWALL



JON A. GOSCH
Phone: 503-643-3517
Pager: 503-441-8940

website: <http://users.myexcel.com/precision1>

Quality work at affordable rates
Licensed • Bonded • Insured • CCB #77073



ROBERTSON PAINTING LLC

- Interior/Exterior
- Commercial/Residential
- Powerwashing
- Wallcovering
- Patina Stained Concrete

James Robertson
5425 SW Illinois St.
Portland, OR 97221
(503) 516-1223
(503) 293-6586 (Fax)

CCB# 169852 Insured • Bonded



Allstate
You're in good hands.

24-Hour Customer Service

Claire Roshak
Senior Sales Associate
Willamette Valley Insurance Agency, Inc.

Allstate Insurance Company
2929 Sw Multnomah Blvd.
Suite 106
Portland, OR 97219

Phone 503-244-5244
Cell 503-880-0650
Fax 503-244-5245
ClaireRoshak@allstate.com
8:00 to 5:00 Monday-Friday

We dig the Southwest Portland Post!



The Historic
St. Johns REVIEW

For advertising or subscription information contact
Gayla Patton
PO Box 83068, Portland, Or. 97238
reviewnewspaper@comcast.net - (503) 283-5086

Quality dentistry in a caring, relaxed environment.



FAMILY & COSMETIC DENTISTRY
503-246-2564

7717 SW 34th Avenue • Portland, OR 97219
(Multnomah Village • SW Capitol Highway & 34th Ave.)

SIGNS BY TOMORROW
SIGNS & GRAPHICS NATIONWIDE

The IDEA Today ... The SIGN Tomorrow!

- SIGNS
- BANNERS
- GRAPHICS
- MAGNETICS
- LETTERING
- LOGOS & MORE

503.244.0980
9220 SW Barbur Blvd. #111 - Portland - OR - 97219

skin by Corie Riser
Facials - Waxing - Microdermabrasion - Hot Stone Therapy

Bellezza Salon at Fordham Plaza
8565 SW Beaverton-Hillsdale Hwy, Suite 03
Portland, Oregon 97225

503.952.6710
www.corieriser.com

mention this ad and get \$10 off your first facial treatment!

design & consultation maintenance & renovation



Smiling Gardens

971-275-4204
SmilingGardens.com
Cultivating healthy gardens for over 19 years

SUN DOG CONSTRUCTION.COM

Remodeling - Restoration
Basement / Attic Conversions
Additions, Kitchens, Bathrooms
Moisture / Dry Rot Repair
Home 4 Sale Prep/Inspection
Maintenance/Handyman service



Licensed Bonded / Insured
CCB #173347

503.957.7559 AUTUMN SUN PARDEE
Owner / Contractor / Carpenter


Tree pruning & preservation
Tree & stump removals
Arborist reports & Consulting



MULTNOMAH Tree Experts, LTD.

Peter Torres, M.F.
ISA Certified Arborist (PN-650B)
CCB #154349
Southwest Portland, Oregon

(503) 452-8160
Peter@MultnomahTree.com
www.multnomahtree.com



ELLIOT WALTER
GENERAL CONTRACTORS

Elliot Walter
2545 NE 23rd Ave
Portland OR 97212
503.284.5926
503.282.1629 Fax
CCB # 95067

Fulton Pump Station

(Continued from Page 2)

water system as it flows to storage tanks in Southwest Portland." Built in 1912, over the years the building was expanded to include more pumps but is currently at its maximum capacity.

The City is considering three options. Option 1 would be to demolish and rebuild the pump station on site. This would require a temporary station to be built to keep the area's water system operational while the Fulton station is off-line. Because cost, access problems relating to the surrounding development and disruption to traffic along Macadam Avenue, this is not the bureau's favorite.

Option 2 would be to relocate the Fulton station into Willamette Park. This seems to be the bureau's favorite. While it would mean giving up about 600 square feet in the park, benefits would include a shorter, less difficult construction process that would allow the bureau to keep the existing pump station in full operation. There is a possibility of including restrooms and having public input into the ultimate design of the station.

Option 3 would be to purchase a new site altogether. Somewhere in the 500 to 600 block of Southwest Nevada Street, near the current facility, the bureau would purchase and demolish existing houses. This option would be expensive because of the added cost of real estate and demolition. Condemnation could get ugly.

A public meeting will be held on Saturday, February 21 from 10 a.m. to 12 noon at the Portland French School, 6318 SW Corbett Ave. You can also let the bureau know your preference by visiting this website www.portlandonline.com/water/comments. Or call the Water Bureau outreach staff at 503-823-6926.

POST CLASSIFIED ADS

Classified Ads

Print Only is \$32 per column inch (up to 15 words per inch) Includes design! Print and Online are \$64 per column inch. Frequency discounts are available

Online Text Only is \$2 per word (15 word minimum)

E-mail: (preferred) ads@multnomahpost.com
Online Form:
www.multnomahpost.com

Phone: 503-244-6933

For Sale

Steel Buildings Factory Deals Can Erect

www.scg-grp.com Source#08R
Phone: 503-946-3896

Office Space



Artsy, quiet space in the new Village Offices located at 2929 SW Multnomah Blvd. Five spaces left in this three-story building with free parking, waiting rooms and conference room. Spaces from 280 SF to 470 SF. Rent starts at \$735/month, all utilities included. Contact Jacobsen Real Estate Group at 503-675-3925.

Wellness Directory

Healing Arts

Paths to Wellness Healing Arts

- Transformational Psychotherapy
- T'ai Chi/Qigong
- Meditation
- The BodyTalk System



503-490-9046
Elizabeth Boyd Tyler, LPC, CBP
Multnomah Village Garden Sanctuary
www.paths2wellness.net

Massage

Healing Touch Massage

Dorothy Cundall, LMT, CNA, MA; LIC #5316
Energy healing • reiki • therapeutic massages • reflexology • pranial healing • care facilities
Holiday Specials • Gift Certificates • Visa & Mastercard
11445 SW Scholls Ferry Rd., (next to Big Reds restaurant)
503-297-1360



David Klick, LMT
Advanced Massage Therapy
Since 1992
License# 3927
Deep Soothing Massage
Garden Retreat Setting

by appointment
503.977.3454
www.advancedlmt.com

Naturopathic

Dr. Yvonne Justine Kreger Naturopathic Family Physician

- Thyroid and Hormone Imbalances
- Depression/Mood Swings
- Fibromyalgia/Fatigue
- Environmental & Food Allergies
- Menopause & Bioidentical Hormone Replacement



HOLISTIC HEALTHCARE FOR WOMEN

1616 S.W. Sunset Blvd., Suite E
Portland, Oregon 97239
(503) 293-5000



To Advertise in the Wellness Directory:

E-mail: (preferred)
ads@multnomahpost.com

Online Form:
www.multnomahpost.com

Fax: 1-866-727-5336

Phone:
Don or Harry at 503-244-6933

Snail Mail: Post Advertising
7825 SW 36th Ave, Suite #203,
Portland, OR 97219

Ash Creek Woods



Better than new! Impeccable inside and out. 4 BR 2.5 BA. Gourmet kitchen w/ attached family room & eating area that opens to huge private deck designed for the best in outdoor living. Large master with remodeled bath. \$697,000

Hillsdale



Original owner! Dayranch built in 1954 w/ 3+ BR, 1.5 BA. Large .41 acre lot w/ view. Quiet area. Mid Century design. Deck entrance off eating area & dining room. kitchenette, den and light & bright family room w/ fireplace on lower level. \$539,000

Vermont Hills



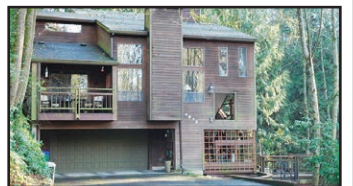
Solid brick home on beautiful private .42 acre lot. First time on the market in decades. 2 big brick fireplaces, hardwood floors & character. Updates will go a long ways here. Great lot with tons of space and outdoor fireplace for entertaining. \$519,900

Multnomah Village



Gorgeous craftsman style home in the heart of the Village. 4 BR 2.5 BA Impeccably maintained w/ gleaming hardwood floors. Finished 300 sqft above detached garage that's perfect for office / studio. Professionally landscaped garden in private backyard. Perfect place to unwind after a long day. \$469,500

Garden Home



1980 Contemporary 3 BR, 2 BA home minutes from Multnomah Village. Spacious 2,072 sqft living in a secluded .28 acre environment. SS appliances & gas heat. 4 decks & separate bonus room for entertaining. Private wooded & creek views. \$418,000

Hillsdale



First time on the market! Custom built in 1956. 4 bedrooms & 2 fireplaces, family room & workshop. Vaulted ceilings and hardwoods. Beautiful lot with SW views. Great location in Hillsdale. \$399,900

Multnomah Village



View of the coast range! 3 BR, 2 BA home. 1,652 sqft. Light & bright living room w/ woodstove & slider to large deck. 2 kitchens & oak floors. View & private deck from master bedroom. Driveway & garage below. \$359,000

Multnomah Village



Must see this private oasis! 3+ BR, 1.5 BA. Very cool kitchen w/ glass tiles, SS appliances & eating area. Private "get away" office, bonus room or 4th BR over garage. Hardwood floors thru-out, deck & large private fenced yard. \$349,500

Multnomah Village



Cozy Bungalow located in Multnomah Village. Living room w/ hardwood floors, fireplace and view. Master bedroom upstairs w/ full bath. Unfinished basement. Great yard & located on a large .21 acre lot. \$349,000

Vermont Hills



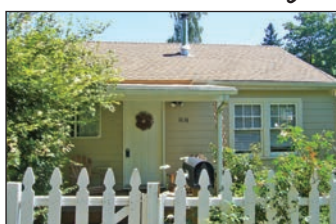
Excellent value! Classic Mid-Century Day Ranch w/ sunset views. Living room w/ cozy fireplace. Large kitchen w/ eating area. Lower level offers office / den, family room w/ fireplace, laundry room & full bath. Hardwood floors under carpets. \$335,000

Hillsdale



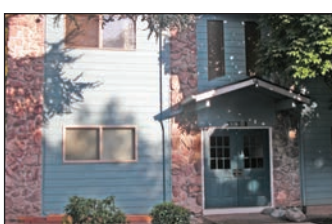
Hillsdale's best Rowhouse. Large slate entry way into this light & bright end unit. Hardwood floors, tile counters & gas fireplace. Wonderful eating area surrounded by windows with door to covered deck. 2 master suites. Quiet location next to Hillsdale. Oversized single garage with loads of extra room. \$309,500

Multnomah Village



Wonderful cottage in the heart of Multnomah Village. 2 bedrooms, 1 bath w/ finished 200 sqft bonus room in basement. Hardwoods under carpets & woodstove. Cute picket fence, garden and garden shed. \$235,000

Multnomah



The original model unit! One owner. Level entry to your one level hideaway. Very clean 1 bedroom condo. Sliders to your nice quiet patio overlooking private wooded nature setting. Located just blocks to Multnomah Village. \$114,500

Parker Realty, Inc.

503.977.1888
www.parkerrealtyportland.com

7830 SW 35th Ave

Jeff Parker

Your neighborhood Realtor
Since 1980



A donation is made to Neighborhood House, Inc., with each sale!